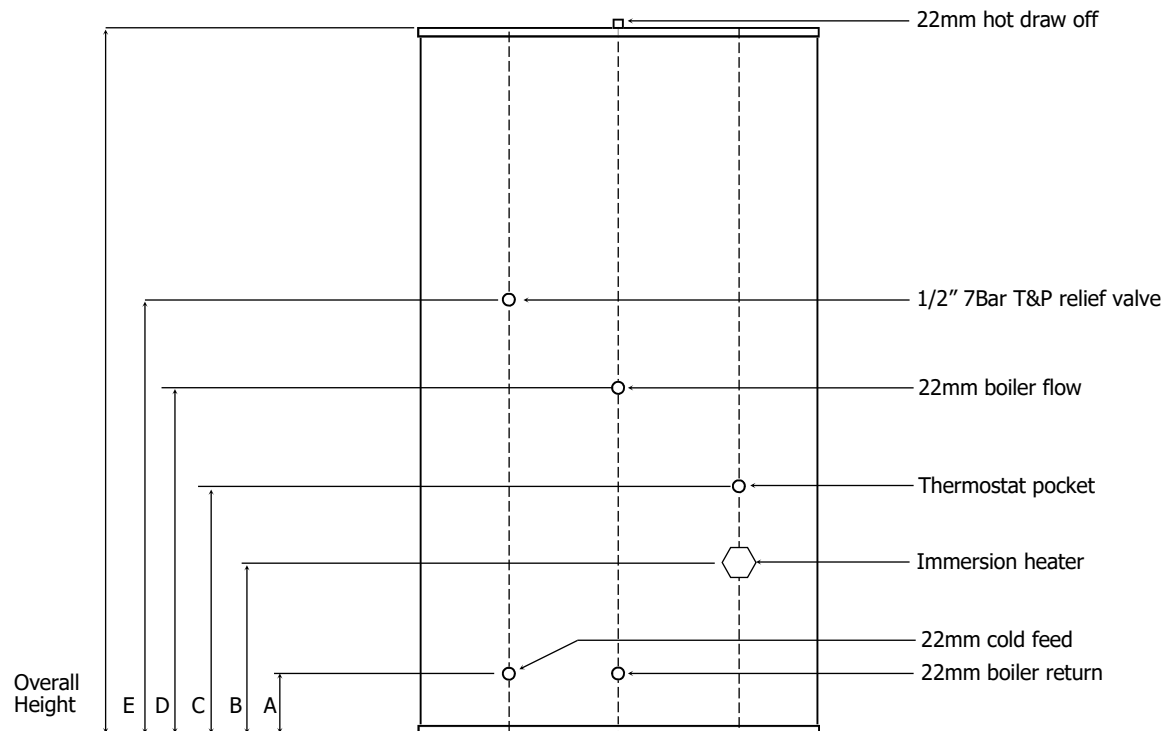


# Technical Data Sheet

## Tornado Indirect



All unvented cylinders come with an unvented component kit to suit. Dimensions are subject to change without any prior notice.

Product Code	T2SI125/3.0	T2SI150/3.0	T2SI170/3.0	T2SI200/3.0	T2SI250/3.0	T2SI300/0.0
Nominal Capacity (L)	125	150	170	200	250	300
Height (mm)	1025	1260	1325	1550	1800	2050
Diameter Ø (mm)	580	580	580	580	580	580
A (mm)	171	171	171	171	171	171
B (mm)	201	201	201	201	201	201
C (mm)	401	401	451	451	571	571
D (mm)	501	496	601	601	821	821
E (mm)	651	858	813	1040	1268	1460
Empty Weight (kg)	35	38	42	46	55	61
Full Weight (kg)	156	187	210	240	301	355
Standing Heat Loss (kWh/24h)	1.21	1.36	1.40	1.64	1.71	1.82
Reheat time from 10°C to 60°C	36	37	36	33	35	40
Actual capacity (L)	121	149	168	194	246	294
Standing loss (W)	68	77	82	77	83	92
Energy efficiency class of model	C	C	C	C	C	C
Operating Pressure (bar)	3	3	3	3	3	3
Immersion Heater Rating	3kw 240v	3kw 240v	3kw 240v	3kw 240v	3kw 240v	3kw 240v
Max incoming supply pressure (bar)	12	12	12	12	12	12