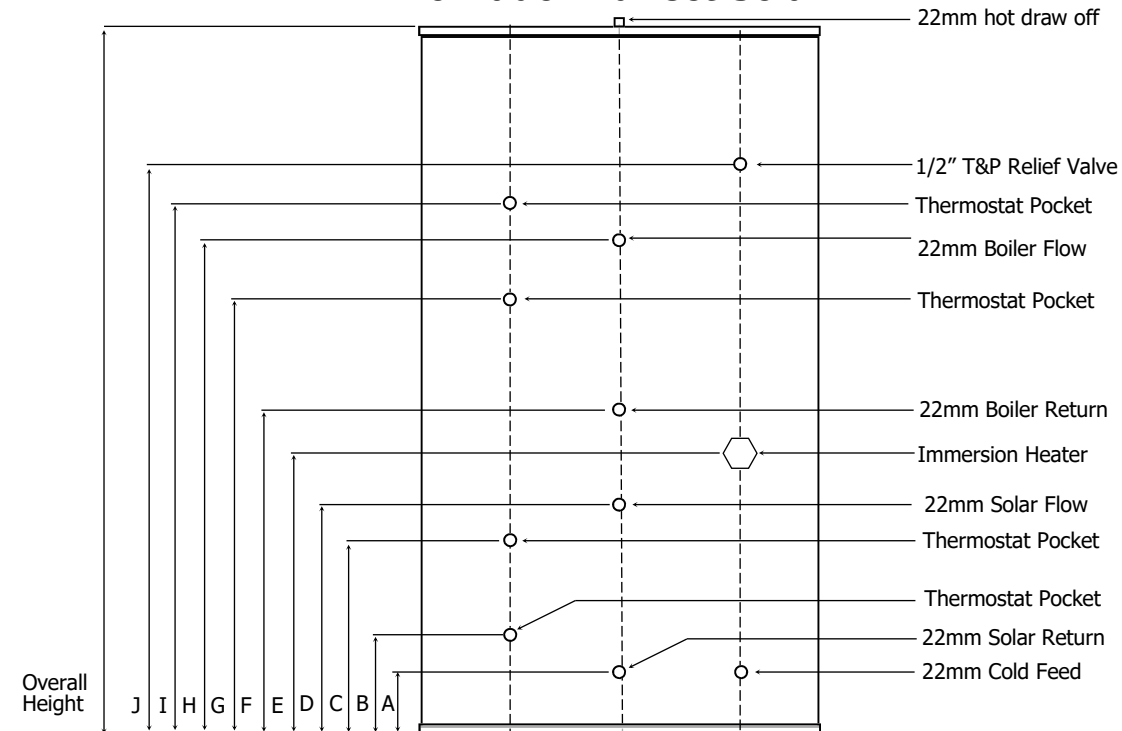


Technical Data Sheet

Tornado Indirect Solar



All unvented cylinders come with an unvented component kit to suit. Dimensions are subject to change without any prior notice.

Product Code	T2SI170/S/3.0	T2SI200/S/3.0	T2SI250/S/3.0	T2SI300/S/3.0
Nominal Capacity (L)	170	200	250	300
Height (mm)	1325	1550	1800	2050
Diameter Ø (mm)	580	580	580	580
A (mm)	171	171	171	171
B (mm)	221	221	221	221
C (mm)	326	371	371	371
D (mm)	401	401	481	481
E (mm)	471	481	561	561
F (mm)	541	561	621	621
G (mm)	696	771	901	901
H (mm)	771	871	1001	1001
I (mm)	813	1040	1250	1400
J (mm)	813	1040	1280	1430
Empty Weight (kg)	42	46	55	61
Full Weight (kg)	214	244	305	359
Standing Heat Loss (kWh/24h)	1.40	1.64	1.71	1.82
Reheat time from 10°C to 60°C	36	33	35	40
Actual capacity (L)	168	194	246	294
Standing loss (W)	82	77	83	92
Energy efficiency class of model	C	C	C	C
Operating Pressure (bar)	3	3	3	3
Immersion Heater Rating	3kw 240v	3kw 240v	3kw 240v	3kw 240v
Max incoming supply pressure (bar)	12	12	12	12