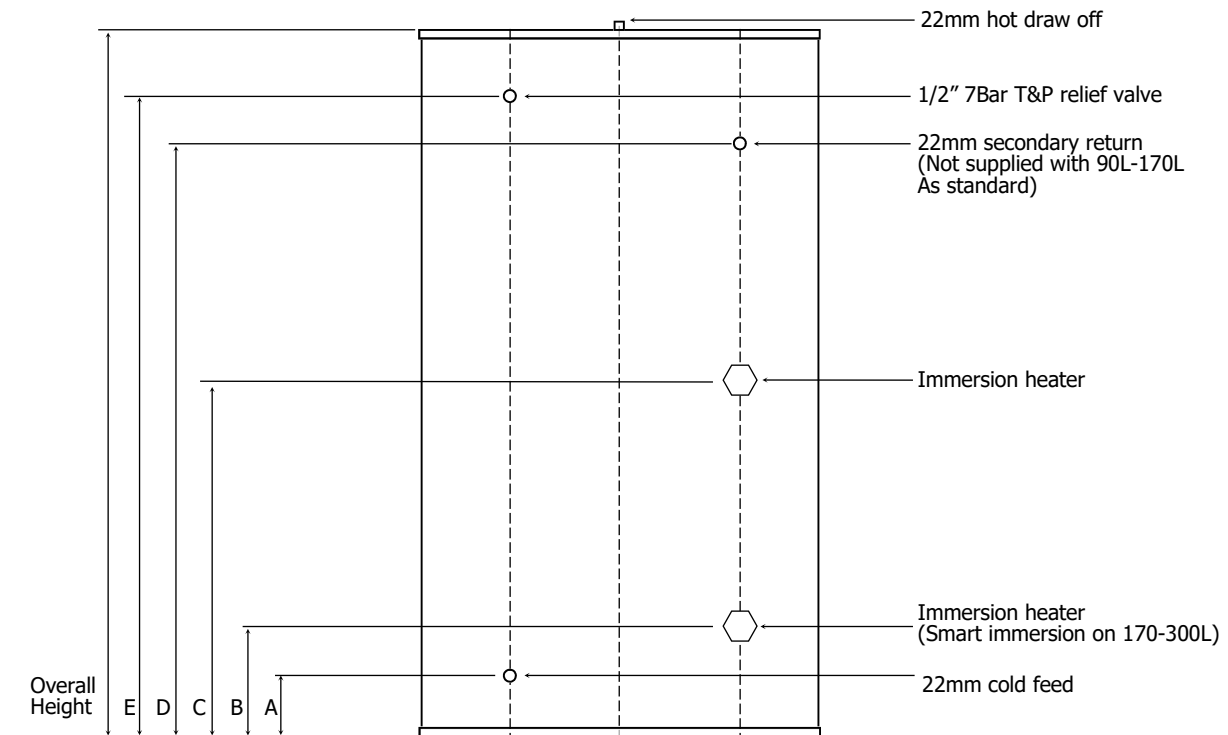


Technical Data Sheet

Tempest Direct Slimline



All unvented cylinders come with an unvented component kit to suit. Dimensions are subject to change without any prior notice.

Product Code	TSMD090SL	TSMD125SL	TSMD150SL	TSMD170SL	TSMD200SSL	TSMD200SL	TSMD250SL	TSMD300SL
Nominal Capacity (L)	90	125	150	170	200	200	250	300
Height (mm)	830	1050	1200	1500	1800	1500	1800	2020
Diameter Ø (mm)	470	470	470	470	470	510	510	510
A (mm)	156	156	156	156	156	171	171	171
B (mm)	186	186	186	186	186	201	201	201
C (mm)	406	606	606	606	606	721	621	921
D (mm)	n/a	n/a	n/a	n/a	1406	1221	1421	1671
E (mm)	656	861	1011	1306	1604	1321	1621	1821
Empty Weight (kg)	30	33	36	40	44	44	53	59
Full Weight (kg)	119	154	185	208	238	238	299	353
Standing Heat Loss (kWh/24h)	1.59	1.64	1.85	1.97	1.85	1.85	2.00	2.22
Reheat time from 10°C to 60°C (Based on two 3Kw immersion heaters)	53	73	87	99	116	116	145	175
Actual capacity (L)	89	121	149	168	194	194	246	294
Standing loss (W)	66	68	77	82	77	77	83	92
Energy efficiency class of model	C	C	C	C	C	C	C	C
Operating Pressure (bar)	3	3	3	3	3	3	3	3
Immersion Heater Rating	2 X 3kw 240v	2 X 3kw 240v	2 X 3kw 240v	2 X 3kw 240v	2 X 3kw 240v	2 X 3kw 240v	2 X 3kw 240v	2 X 3kw 240v
Max incoming supply pressure (bar)	12	12	12	12	12	12	12	12