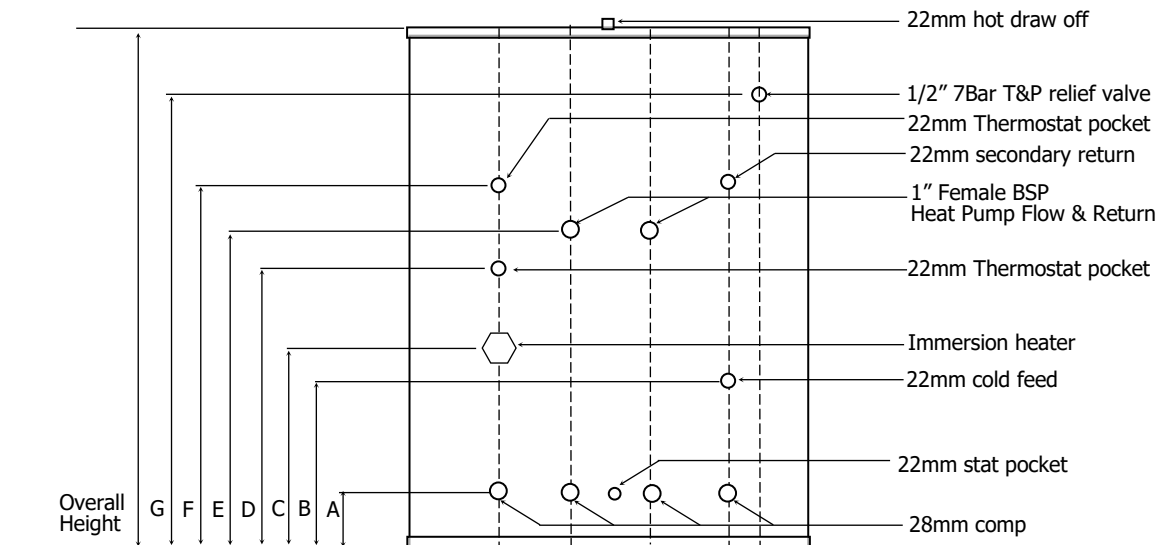


Technical Data Sheet

HP Unvented & 30L Buffer



All unvented cylinders come with an unvented component kit to suit Dimensions are subject to change without any prior notice

Product Code	TSMI150/30/HP	TSMI170/30/HP	TSMI200/30/HP	TSMI250/30/HP	TSMI300/30/HP
Nominal Capacity (L)	150	170	200	250	300
Buffer Capacity (L)	30	30	30	30	30
Height (mm)	1155	1220	1320	1680	1925
Diameter (mm)	580	580	580	580	580
A (mm)	95	95	95	95	95
B (mm)	388	388	388	388	388
C (mm)	418	418	418	418	418
D (mm)	638	758	808	858	858
E (mm)	818	1033	1033	1033	1033
F (mm)	918	983	1060	1290	1538
G (mm)	968	1033	1135	1490	1738
Empty Weight (kg)	70	79	88	98	110
Full Weight (kg)	219	247	282	344	404
Standing Heat Loss (kWh/24h)	1.85	1.94	1.85	2.00	2.22
Actual capacity (L)	149	168	194	246	294
Standing loss (W)	77	81	77	83	92
Energy efficiency class of model	C	C	C	C	C
Coil surface area (m ²)	2	2	3	3	3
Immersion Heater (Qty x Kw rating)	1 x 3	1 x 3	1 x 3	1 x 3	1 x 3
Operating pressure (bar)	3	3	3	3	3
Max incoming supply pressure (bar)	12	12	12	12	12



T: 01952 257961
F: 01952 253452

E: sales@telford-group.com
W: www.telford-group.com