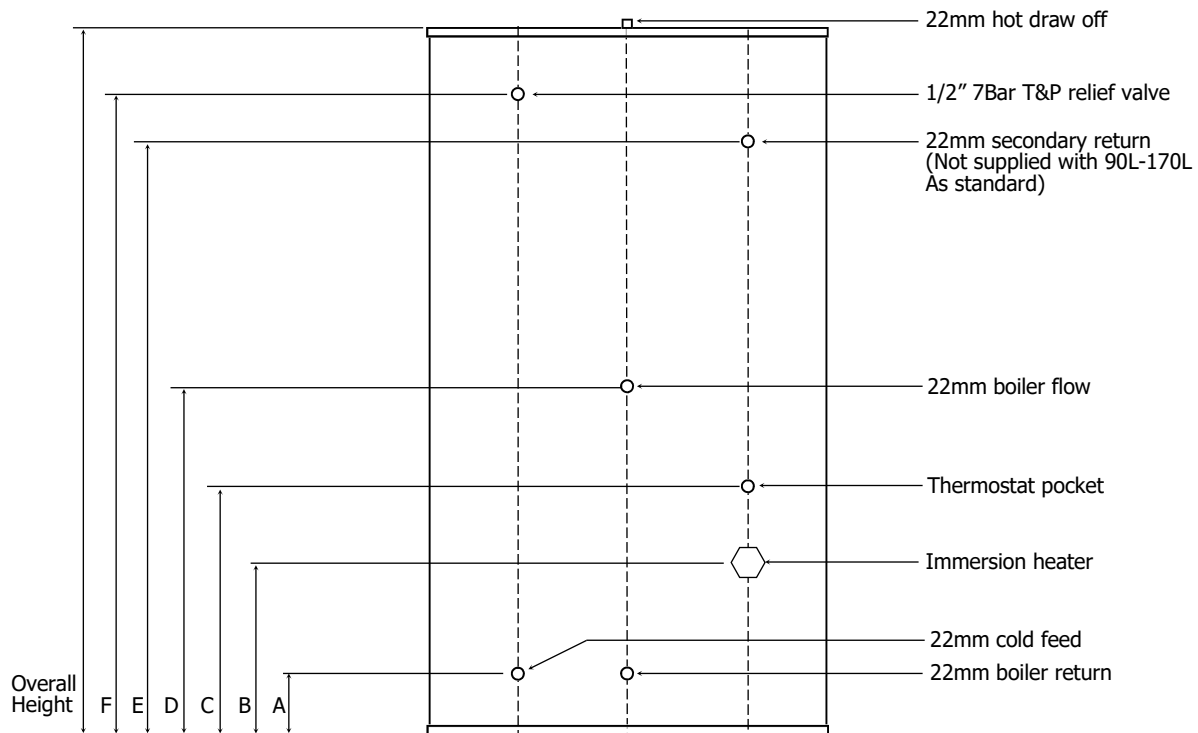


# Technical Data Sheet

## Tempest Indirect Slim Line



All unvented cylinders come with an unvented component kit to suit. Dimensions are subject to change without any prior notice.

Product Code	TSMI090SL	TSMI125SL	TSMI150SL	TSMI170SL	TSMI200SSL	TSMI200SL	TSMI250SL	TSMI300SL
Nominal Capacity (L)	90	125	150	170	200	200	250	300
Height (mm)	830	1050	1200	1500	1800	1500	1800	2020
Diameter Ø (mm)	470	470	470	470	470	510	510	510
A (mm)	156	156	156	156	156	171	171	171
B (mm)	186	186	186	186	186	201	201	201
C (mm)	386	386	436	436	436	451	531	531
D (mm)	482	482	586	586	681	601	821	821
E (mm)	-	-	-	-	1406	1231	1471	1671
F (mm)	656	858	1011	1306	1606	1321	1621	1821
Empty Weight (kg)	32	35	38	42	46	46	55	61
Full Weight (kg)	121	156	187	210	240	240	301	355
Standing Heat Loss (kWh/24h)	1.59	1.64	1.85	1.97	1.85	1.85	2.00	2.22
Reheat time from 10°C to 60°C	26	36	37	36	33	33	35	40
Actual capacity (L)	89	121	149	168	194	194	246	294
Standing loss (W)	66	68	77	82	77	77	83	92
Energy efficiency class of model	C	C	C	C	C	C	C	C
Operating Pressure (bar)	3	3	3	3	3	3	3	3
Immersion Heater Rating	3kw 240v	3kw 240v	3kw 240v	3kw 240v	3kw 240v	3kw 240v	3kw 240v	3kw 240v
Max incoming supply pressure (bar)	12	12	12	12	12	12	12	12