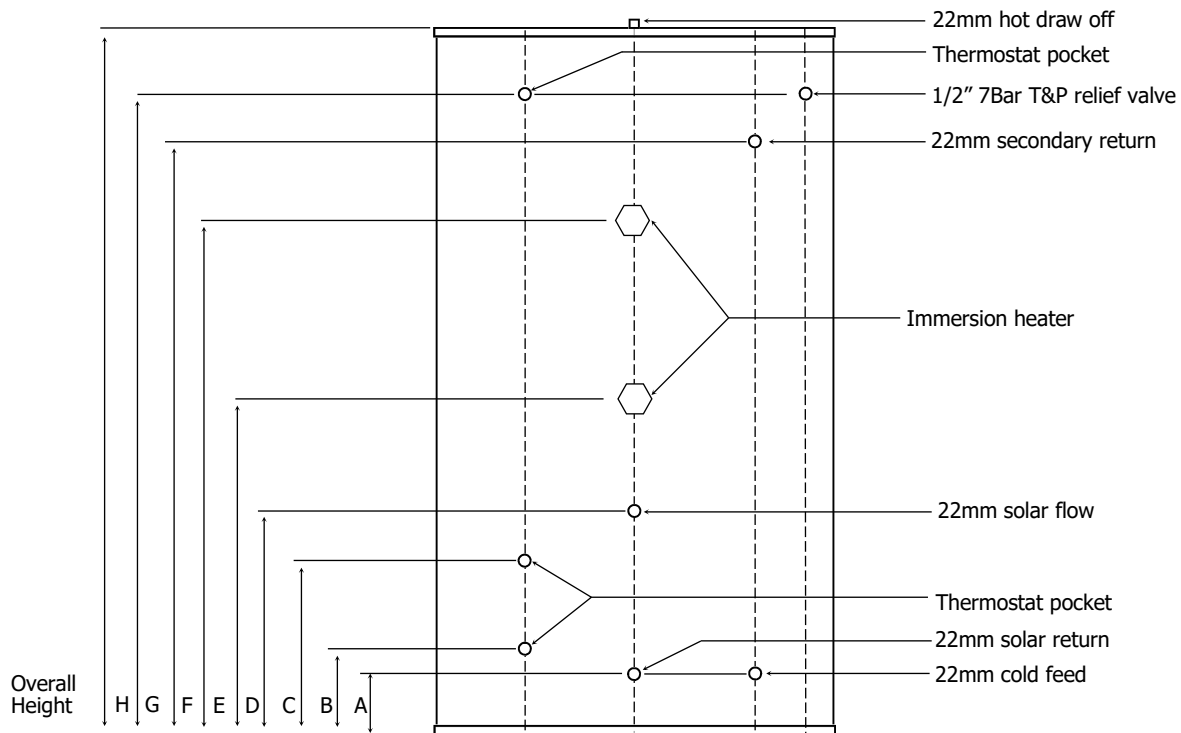


Technical Data Sheet

Tempest Direct Solar



All unvented cylinders come with an unvented component kit to suit. Dimensions are subject to change without any prior notice.

Product Code	TSMD170/S	TSMD200/S	TSMD250/S	TSMD300/S
Nominal Capacity (L)	170	200	250	300
Height (mm)	1200	1150	1500	1750
Diameter Ø (mm)	510	580	580	580
A (mm)	171	193	193	193
B (mm)	221	243	243	243
C (mm)	371	393	393	393
D (mm)	497	503	503	503
E (mm)	621	603	643	643
F (mm)	871	803	1013	943
G (mm)	-	893	1023	1253
H (mm)	1036	928	1293	1543
Empty Weight (kg)	42	46	55	61
Full Weight (kg)	214	244	305	359
Standing Heat Loss (kWh/24h)	1.97	1.85	2.00	2.22
Reheat time from 10°C to 60°C (Based on two 3Kw immersion heaters)	99	116	145	175
Actual capacity (L)	168	194	246	294
Standing loss (W)	82	77	83	92
Energy efficiency class of model	C	C	C	C
Operating Pressure (bar)	3	3	3	3
Immersion Heater Rating	2 X 3kw 240v	2 X 3kw 240v	2 X 3kw 240v	2 X 3kw 240v
Max incoming supply pressure (bar)	12	12	12	12