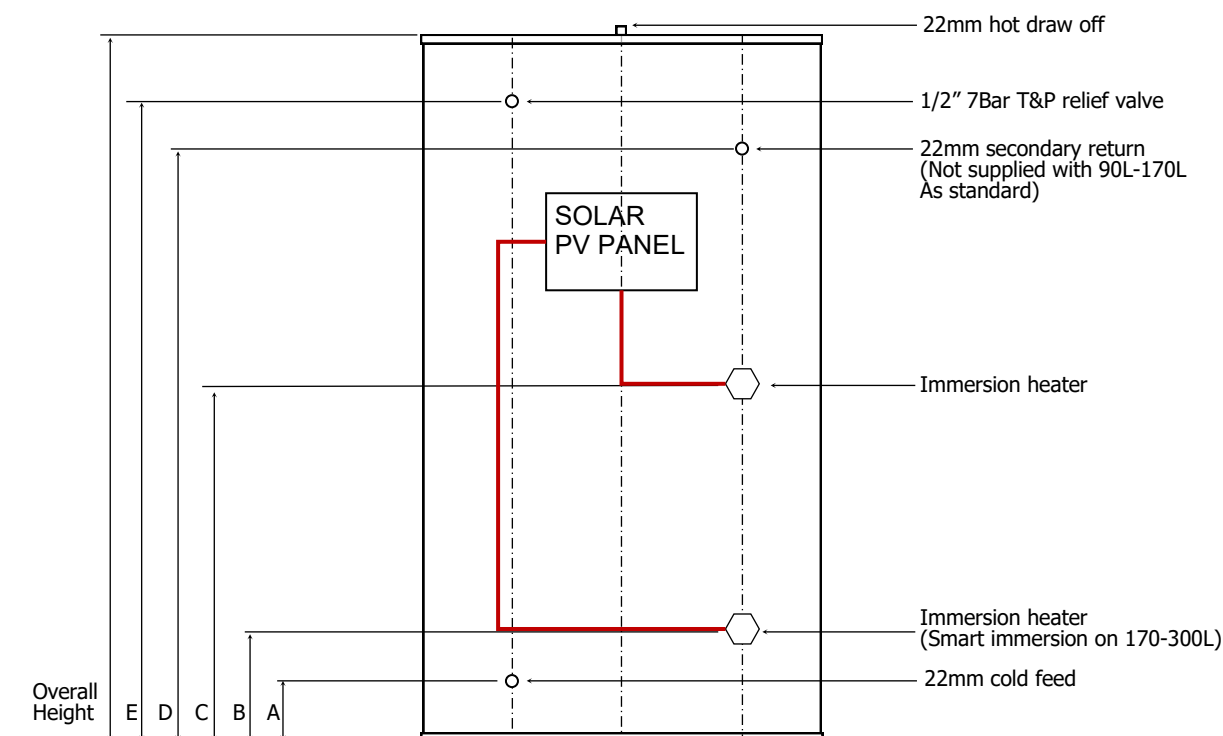


Technical Data Sheet

Tempest Direct Solar PV System



All unvented cylinders come with an unvented component kit to suit. Dimensions are subject to change without any prior notice.

Product Code	TSMD090/PV	TSMD125/PV	TSMD150/PV	TSMD170/PV	TSMD200/PV	TSMD250/PV	TSMD300/PV
Nominal Capacity (L)	90	125	150	170	200	250	300
Height (mm)	750	870	1060	1200	1150	1500	1750
Diameter Ø (mm)	510	510	510	510	580	580	580
A (mm)	171	171	171	171	193	193	193
B (mm)	201	201	201	201	223	223	223
C (mm)	421	421	621	621	643	643	643
D (mm)	-	-	-	-	813	973	1253
E (mm)	551	671	876	1026	928	1293	1543
Empty Weight (kg)	30	33	36	40	44	53	59
Full Weight (kg)	119	154	185	208	238	299	353
Standing Heat Loss (kWh/24h)	1.59	1.64	1.85	1.97	1.85	2.00	2.22
Reheat time from 10°C to 60°C (Based on two 3Kw immersion heaters)	53	73	87	99	116	145	175
Actual capacity (L)	89	121	149	168	194	246	294
Standing loss (W)	66	68	77	82	77	83	92
Energy efficiency class of model	C	C	C	C	C	C	C
Operating Pressure (bar)	3	3	3	3	3	3	3
Immersion Heater Rating	2 X 3kw 240v	2 X 3kw 240v	2 X 3kw 240v	2 X 3kw 240v	2 X 3kw 240v	2 X 3kw 240v	2 X 3kw 240v
Max incoming supply pressure (bar)	12	12	12	12	12	12	12



T: 01952 257961
F: 01952 253452

E: sales@telford-group.com
W: www.telford-group.com