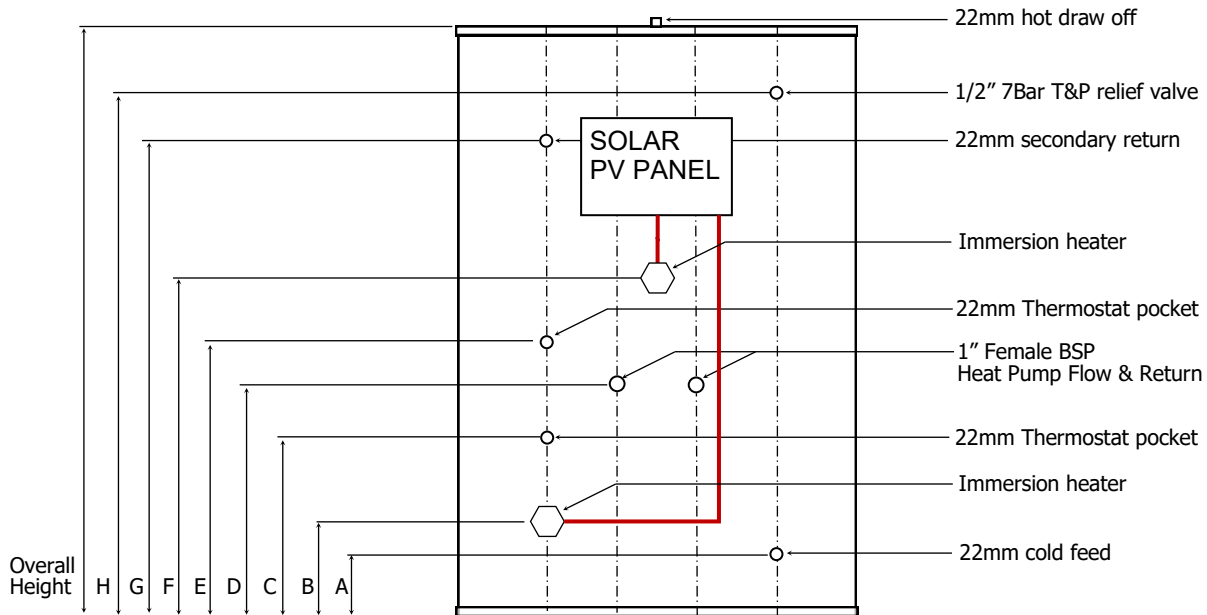


Technical Data Sheet

Tempest Heat Pump Solar PV System



400&500L supplied with 1" F cons & unv kit as standard.

All unvented cylinders come with an unvented component kit to suit. Dimensions are subject to change without prior notice

Product Code	TSMI200/HP/PV	TSMI250/HP/PV	TSMI300/HP/PV	TSMI400/HP/PV	TSMI500/HP/PV
Nominal Capacity (L)	200	250	300	400	500
Height (mm)	1500	1800	1780	1590	1835
Diameter Ø (mm)	554	554	580	660	660
A (mm)	171	171	193	233	233
B (mm)	201	201	223	263	263
C (mm)	700	570	598	640	640
D (mm)	900	900	923	860	860
E (mm)	1000	970	993	935	935
F (mm)	1100	1070	1093	1035	1035
G (mm)	1220	1485	1312	1235	1495
H (mm)	1320	1635	1540	1335	1585
Empty Weight (kg)	46	55	61	68	75
Full Weight (kg)	240	301	355	459	560
Standing Heat Loss (kWh/24h)	1.85	2.00	2.22	2.42	2.49
Actual capacity (L)	199	252	303	399	501
Standing loss (W)	77	83	92	101	104
Energy efficiency class of model	C	C	C	C	C
Coil surface area (m ²)	3m ²	3m ²	3m ²	3m ²	3m ²
Immersion Heater (Qty x Kw rating)	2 x 3	2 x 3	2 x 3	2 x 3	2 x 3
Operating pressure (bar)	3	3	3	3	3
Max incoming supply pressure (bar)	12	12	12	12	12



T: 01952 257961
F: 01952 253452

E: sales@telford-group.com
W: www.telford-group.com