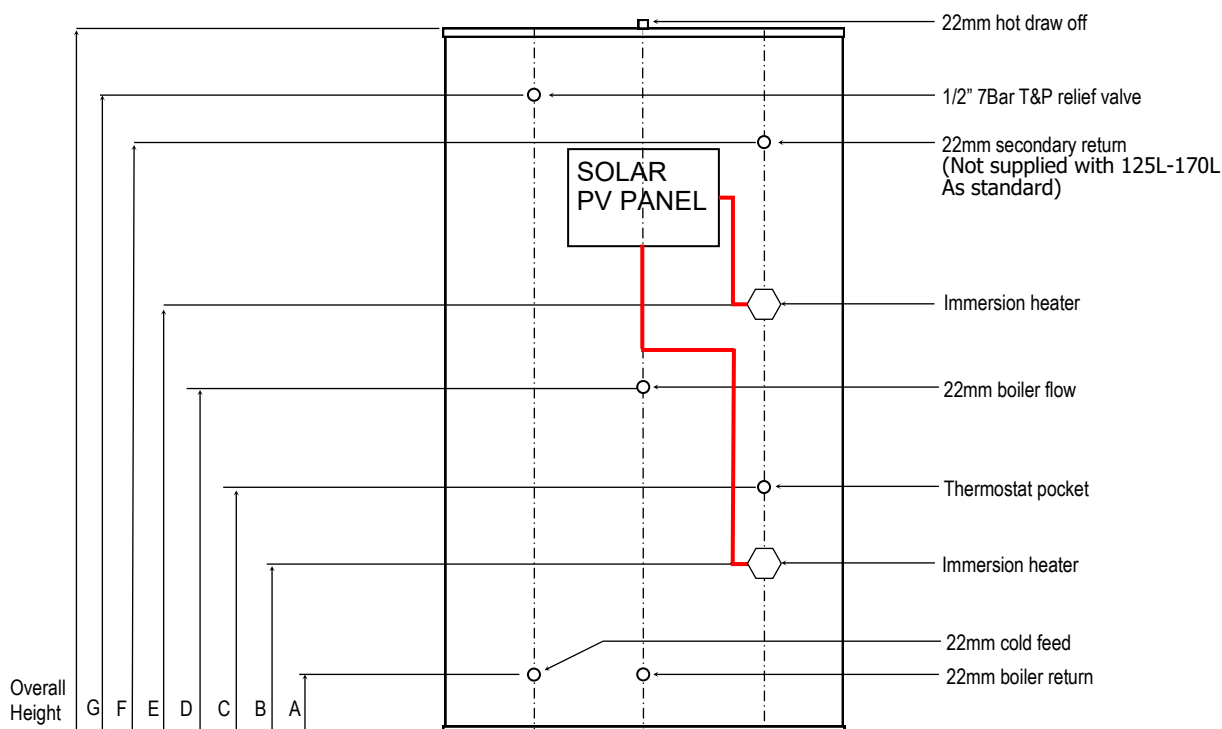


Technical Data Sheet

Tempest Indirect Solar PV System



All unvented cylinders come with an unvented component kit to suit. Dimensions are subject to change without any prior notice.

Product Code	TSMI125/PV	TSMI150/PV	TSMI170/PV	TSMI200/PV	TSMI250/PV	TSMI300/PV
Nominal Capacity (L)	125	150	170	200	250	300
Height (mm)	870	1060	1200	1150	1500	1750
Diameter Ø (mm)	510	510	510	580	580	580
A (mm)	171	171	171	193	193	193
B (mm)	201	201	201	223	223	223
C (mm)	401	401	451	473	553	553
D (mm)	497	497	601	623	843	843
E (mm)	597	597	701	723	943	943
F (mm)	-	-	-	813	1043	1253
G (mm)	699	876	1026	928	1263	1543
Empty Weight (kg)	35	38	42	46	55	61
Full Weight (kg)	156	187	210	240	301	355
Standing Heat Loss (kWh/24h)	1.64	1.85	1.97	1.85	2.00	2.22
Reheat time from 10°C to 60°C	36	37	36	33	35	40
Actual capacity (L)	121	149	168	194	246	294
Standing loss (W)	68	77	82	77	83	92
Energy efficiency class of model	C	C	C	C	C	C
Operating Pressure (bar)	3	3	3	3	3	3
Immersion Heater Rating	2 x 3kw 240v	2 x 3kw 240v	2 x 3kw 240v	2 x 3kw 240v	2 x 3kw 240v	2 x 3kw 240v
Max incoming supply pressure (bar)	12	12	12	12	12	12



T: 01952 257961
F: 01952 253452

E: sales@telford-group.com
W: www.telford-group.com